

## 20 Chapel Street, Bere Alston, Yelverton, Devon, PL20 7DE

Sold @ Auction £100,000



- FOR SALE BY ONLINE AUCTION
- VIDEO TOUR NOW ONLINE
- LEGAL PACK COMPLETE
- WEDNESDAY 24TH JULY 2024
- VIEWINGS - REFER TO DETAILS
- SOLD @ JULY ONLINE AUCTION
- FREEHOLD END OF TERRACE HOUSE
- 2 BEDS | REAR GARDEN | 543 Sq Ft
- BASIC UPDATING | EXTEND TO REAR
- EXTENDED 8 WEEK COMPLETION

Hollis Morgan – JULY LIVE ONLINE AUCTION - A Freehold END OF TERRACE 2 BED HOUSE ( 543 Sq Ft ) with REAR GARDEN with scope for BASIC UPDATING.

# 20 Chapel Street, Bere Alston, Yelverton, Devon, PL20 7DE

## Accommodation

## Floor plan

### FOR SALE BY LIVE ONLINE AUCTION

\*\*\* SOLD @ JULY ONLINE AUCTION \*\*\*

GUIDE PRICE £100,000 +++  
SOLD PRIOR @ £100,000

ADDRESS | 20, Chapel Street Bere Alston, PL20 7DE

Lot Number 55

The Live Online Auction is on Wednesday 24th July 2024 @ 17:30  
Registration Deadline is on Monday 22nd July 2024 @ 16:00

The Auction will be streamed LIVE ONLINE via the Hollis Morgan website & you can choose to bid by telephone, proxy or via your computer. Registration is a simple online process – please visit the Hollis Morgan auction website and click “REGISTER TO BID”

### THE PROPERTY

A Freehold 2 bedroom end of terrace property with accommodation ( 543 Sq Ft ) arranged over two floors and generous rear garden with shed and side access.

Entrance Hall | Lounge | Kitchen | WC  
Bedroom 1 | Bedroom 2 | Bathroom  
Rear Garden | Shed | Side Access

Sold with vacant possession.

Tenure - Freehold

Council Tax - A

EPC - D

Utilities, Rights & Restrictions - S157 - Please refer to the Legal Pack

Flood Risk - Please refer to the Legal Pack

### THE OPPORTUNITY

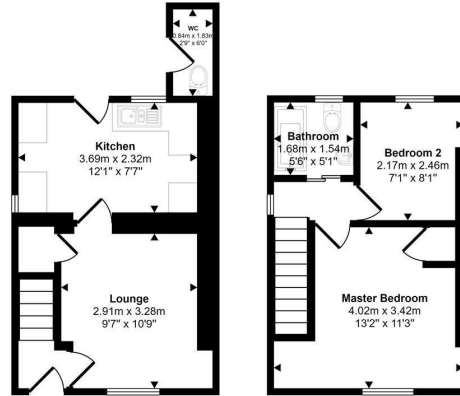
HOUSE | UPDATING

The property has been let for many years ( now vacant ) and would benefit from some basic updating to make a fine home in this sought after location.

EXTEND TO REAR | ATTIC

There is scope to extend the property to the rear OR into the attic space to create further accommodation - subject to consents.

Approx Gross Internal Area  
50 sq m / 543 sq ft

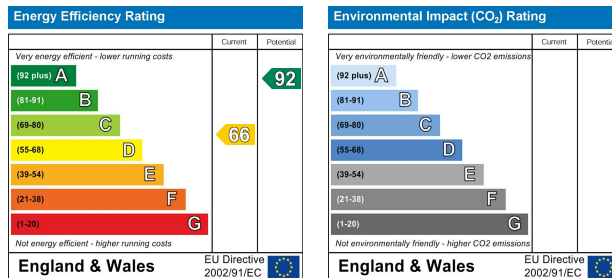


Ground Floor  
Approx 26 sq m / 284 sq ft

First Floor  
Approx 24 sq m / 259 sq ft

Whilst every attempt has been made to ensure the accuracy of the floor plan contained here, measurements of doors, windows, rooms and any other items are approximate and no responsibility is taken for any error, omission, or mis-statement. The measurements should not be relied upon for valuation, transaction and/or funding purposes. This plan is for illustrative purposes only and should be used as such by any prospective purchaser or tenant.

## EPC Chart



9 Waterloo Street

Clifton

Bristol

BS8 4BT

Tel: 0117 973 6565

Email: post@hollismorgan.co.uk

www.hollismorgan.co.uk

Hollis Morgan Property Limited, registered in England, registered 7275716.

Registered address, 5 Upper Belgrave Road, Clifton, Bristol BS8 2XQ

## Auction Property Details Disclaimer

Hollis Morgan endeavour to make our sales details clear, accurate and reliable in line with the Consumer Protection from Unfair Trading Regulations 2008 but they should not be relied on as statements or representations of fact.

Please refer to our website for further details.